

**CERTIFIED LAND CORNER RECORDATION**

DESCRIPTION OF CORNER EVIDENCE FOUND, AND ORIGINAL RECORD (If known)

LOCATION                      No evidence of corner monument found. (Corner falls in area subject to flooding)

$\frac{1}{4}$

S.3 S.2                      Corner position re-established by proportionate measurement.

T.12N.,R.64W.              G.L.O. record - Sandstone, 18" x 10" x 5" - 1874.

6th P.M.

DESCRIPTION OF MONUMENT AND ACCESSORIES ESTABLISHED TO PERPETUATE THE ORIGINAL LOCATION OF THIS CORNER:

At the corner: Set a 1½" dia. x 30" long (concrete-filled) iron pipe with brass cap.

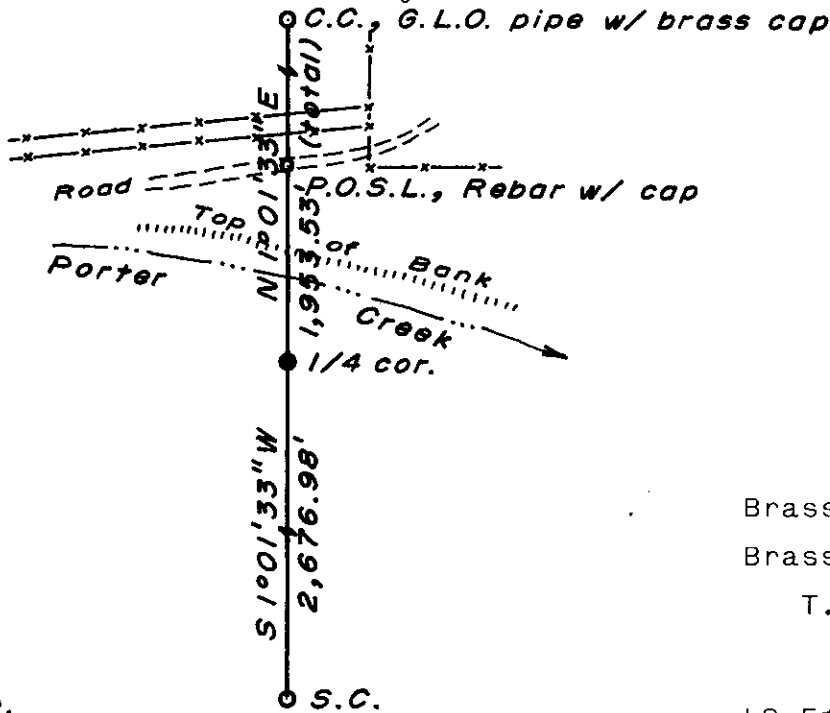
Accessories:    A 5/8" dia. x 24" long rebar with aluminum cap (stamped P.O.S.L.) bears N 1°01'33" E, 102.03 feet distant.

                    Placed old tire (rock-filled) around corner monument.

SKETCH, WITH COURSE AND DISTANCE TO ADJACENT CORNER IF DETERMINED IN THIS SURVEY.

(May Sketch or Paste Reproduction on Reverse Side.)

Basis of Bearing - By solar observation.  
Distances based on measurements by electronic means.



1" = 100'

Brass cap set 4" above surface.

Brass cap stamped:

T.12N. R.64W.

$\frac{1}{4}$

S.3 S.2

LS 519

1979



I, R. L. Hudson certify that I have carefully performed ~~or reviewed~~ the work done on the diagrammed corner as reported on this recordation form and approve the same.

R. L. Hudson Wyoming L.S. No. 519  
Signature of Surveyor                      Registration No.

STATE OF WYOMING,  
Office of Clerk and Recorder,  
County of Yamhill

534723

This "corner record" was filed for record on the 6 day of July, 1977, was noted on the cross-index plat and is assigned page No. \_\_\_\_\_, in book No. \_\_\_\_\_.

Janet C. Whitehead  
County Official

Cross Index No.	T. _____	R. _____	Mer.
	<u>C-17</u>	<u>12</u>	<u>64</u>
	_____	_____	_____
	_____	_____	_____
	_____	_____	_____
	_____	_____	_____
	_____	_____	_____

534723

Photographed.....

Indexed.....

Posted.....

Assessor.....